



Exalpha
biologicals INC

Antibodies & Reagents that Answer Real Needs

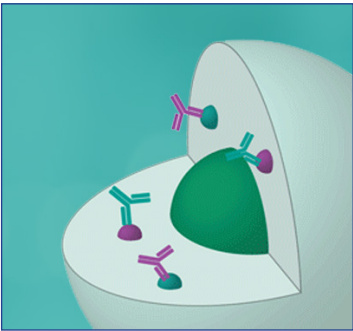
FIX&PERM®

FIX&PERM® is suitable for the analysis of normal and malignant leukocyte populations derived from various human biological samples (blood, bone marrow and others) using flow cytometry. Results must be put within the context of other diagnostic tests as well as the clinical history of the patient by a certified professional before final interpretation.

This FIX&PERM® Cell Fixation and Permeabilization Kit contains 2 reagents: Fixation Medium (Reagent A) and Permeabilization Medium (Reagent B). It is intended for first fixing cells in suspension with Reagent A and then permeabilizing the cell membranes with Reagent B. This procedure gives antibodies access to intracellular structures and leaves the morphological scatter characteristics of cells intact. Specific formulations reduce background staining and allow simultaneous addition of permeabilization medium and fluorochrome labeled antibodies.

Features of FIX&PERM®:

- Mildly fixes cells, preserving their flow cytometric scatter characteristics
- Allows simultaneous characterisation of both intracellular and cell surface markers
- Rapid technique – whole procedure can be carried out in less than one hour, ready for immediate analysis or storage for 24 hours
- Stringent QC procedures – the quality of each lot is determined using well-defined blood samples and subsequent comparison of scatter characteristics of obtained leukocyte populations, ensuring consistent and reliable results lot after lot
- A range of intracellular antibodies with optimised protocols for use with FIX&PERM®



FIX&PERM® Kits
All products are manufactured according to ISO 9001 quality guidelines

Product Code	Product Name	Product Type
GAS-002	FIX&PERM® Cell Fixation and Permeabilization Kit (CE)	Buffers and Reagents
GM-4192	Mouse anti Myeloperoxidase-C2 (MPO-C2), conjugated to FITC	Primary Antibodies
GAS-003	NM-LYSE: Flow Cytometry Lysing Solution	Buffers and Reagents
GIC-212	COMBI IC Reagent: Mouse anti Myeloperoxidase-C2 (FITC) and Mouse anti Lactoferrin (PE)	Primary Antibodies
GM-4132	Mouse anti Lysozyme, conjugated to FITC	Primary Antibodies
GM-4113	Mouse anti Lactoferrin, conjugated to PE	Primary Antibodies

BrdU

Exalpha Biologicals’ BrdU Immunofluorescence kit is a fluorescence staining kit for the detection and localization of bromodeoxyuridine incorporated into newly synthesized DNA of actively proliferating cells.

Features

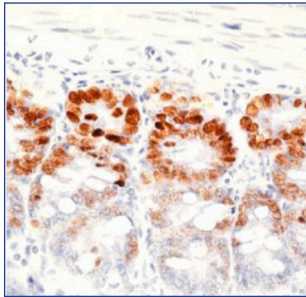
Easy: All reagents provided in dropper bottles prediluted and ready to use

Complete: All buffers, enzymes, positive control slides and stained reference slide provided

Versatile: Can be used to stain tissue from any species

Sensitive: Streptavidin-FL488™ & FL549™ Detection System

Product Code	Product Name	Product Type
X1327K1	BrdU Cell Proliferation Assay Kit	Assay Kit
X1623K1	BrdU Chemiluminescent Cell Proliferation Assay Kit	Assay Kit
X1545K	BrdU Immunohistochemistry Kit	Immunohistochemistry Kit
X1028	Mouse anti BrdU (bromodeoxyuridine)	Monoclonal Antibody
MUB0200P	Mouse anti Bromodeoxyuridine / BrdU	Primary Antibodies



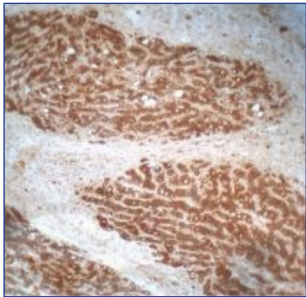
BrdU (bromodeoxyuridine):
Immunohistochemical staining using BrdU antibody on mouse intestine from mice treated with BrdU.

SPARC

Exalpha manufacture and supply a comprehensive range of high-quality antibodies that have been raised against a synthetic peptide derived from human SPARC protein. The polyclonal antibodies are suitable for western blotting, ELISA and immunohistology applications and have been fully validated in Western blotting against whole cell lysate.

Highlights

- The polyclonal antibodies X1867P & X2745P are antigen affinity purified and therefore highly purified products.
- Blocking peptide for use with these antibodies are available.
- The monoclonal antibody X2546M is suitable for paraffin sections.



IHC - Detection of endogenous SPARC in human hepatocellular carcinoma (HCC). 2 ug/ml x 1867P, developed with Vector ImmPress anti-rabbit HRP and DAB substrate.

Product Code	Product Name	Product Type
X1855B	SPARC	Blocking Peptide
X1860P	Rabbit anti Human SPARC	Polyclonal Antibody
X1867P	Rabbit anti Human SPARC	Antigen Immunoaffinity Purified Polyclonal
X2745P	Rabbit anti Human SPARC, conjugated with Biotin	Antigen Immunoaffinity Purified Polyclonal

Chicken IgY

Polyclonal Antibodies generated in chickens, offer many advantages over Polyclonal Antibodies traditionally produced in mammals such as rabbits, goats and sheep. Chickens produce immunoglobulin not only in their serum, but also in the egg yolk. Thus, allowing antibodies to be harvested from antigen-immunised hens simply by the collection of eggs, rather than the usual animal bleeds.

Features

- Chickens are not mammals and therefore are more apt to make high-avidity antibodies to mammalian antigens (especially highly conserved mammalian proteins).
- A single chicken can produce an enormous amount of antibody, up to 3 grams of IgY per month, which is 10-20 times the amount of a rabbit. Furthermore, compared to rabbits, chickens produce antibodies much quicker.
- Fc region of chicken IgY is sufficiently different from mammalian IgG:
 - Reduces background by not binding to mammalian rheumatoid factors or other naturally occurring anti-mammalian antibodies (e.g. HAMA).
 - Does not activate mammalian complement systems.

Product Code	Product Name	Product Type
ACMYC	BChicken anti C-MYC Epitope Tag	Primary Antibodies
IgY-1000	Normal Chicken IgY (egg-derived)	Control Antibodies
DAIgY-F	Donkey anti Chicken IgY (H+L), conjugated with FITC	Secondary Antibodies
RB500	Reagent B (IgY Precipitation) (5 yolks)	Services
IK 8000	EggsPress IgY Purification Kit (80 yolks)	Kits

Custom Chicken IgY Services

We offer custom IgY production where we produce your antibodies in chicken eggs when you provide a purified or recombinant protein. The IgY production can take up to 60 days with the immunized hens laying on average 10-20 eggs. The whole eggs or just the egg yolk can then be shipped to you directly.

In addition to IgY production we are able to offer IgY purification service. The IgY antibodies will be extracted and purified from the egg yolk and will take an additional two weeks to the IgY production service.

All laboratory work is performed using standard operating procedures to assure the highest quality of your custom product.

W: www.exalpha.com

T: 978-425-1370

E: info@exalpha.com

